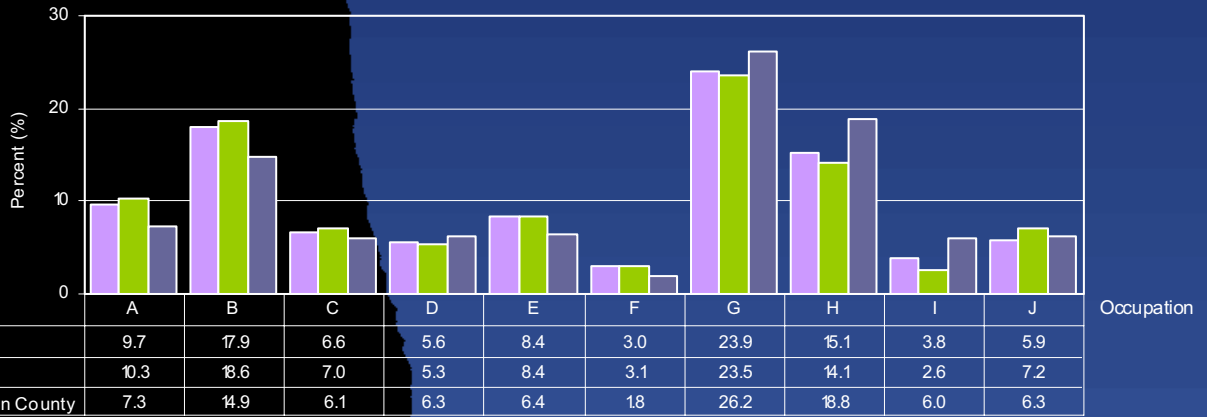


Occupation As Percentage of Total Labour Force 15 Years and Over



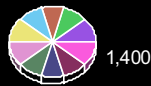
LEGEND

National Occupation Classification

- A. Management
- B. Business, finance and administration
- C. Natural and applied sciences and related
- D. Health
- E. Social science, education, government service and religion
- F. Art, culture, recreation and sport
- G. Sales and service
- H. Trades, transport and equipment operators and related
- I. Primary industry
- J. Processing, manufacturing and utilities

Proportional Pie Chart

Chart size is proportional to the total labour force population

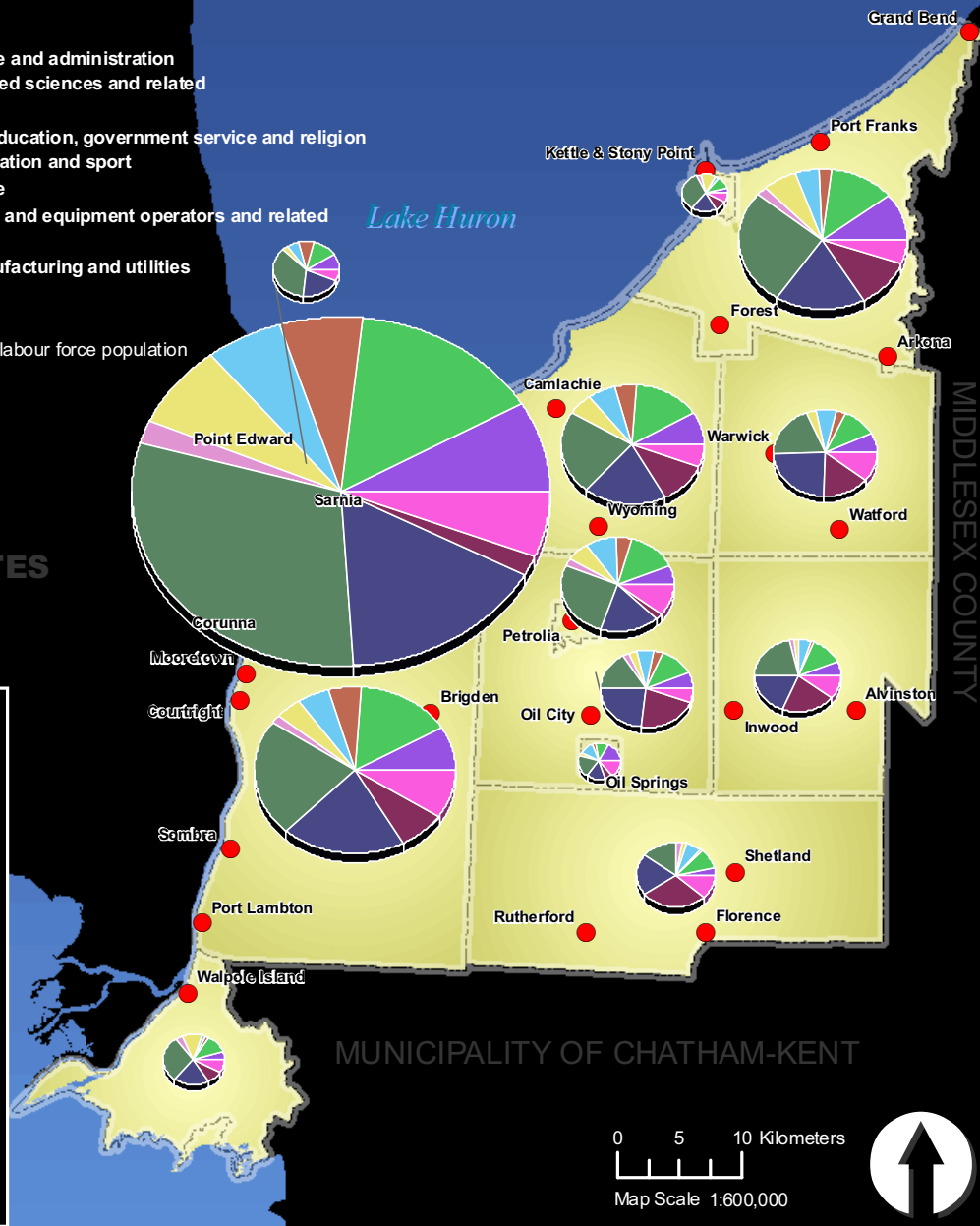


UNITED STATES

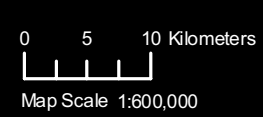
How to Interpret Information Presented on this Page?

Chart Above:
This chart provides a percentage comparison of the total labour force aged 15 years and older by occupation in Lambton County in 2006 with the respective national and provincial population percentages in the same occupations.

Map on the Right:
This map reveals the total labour force composition by occupation of those 15 years and older in each lower-tier municipality in Lambton County in 2006. The map legend, left of the map, describes what each of the colors in the map pie charts indicate, which correspond to the various occupations.



MUNICIPALITY OF CHATHAM-KENT



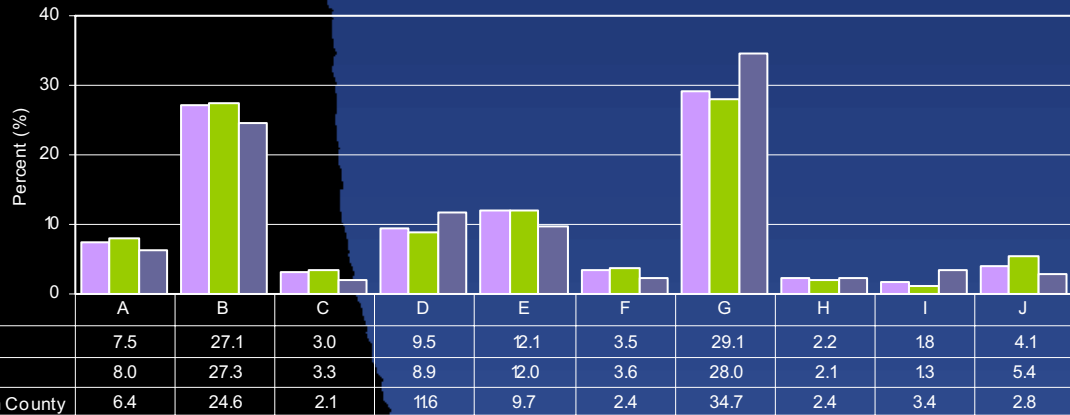
REFERENCE:
2006 Census Data provided by Statistics Canada.
Datum: NAD 83; Projection: UTM Zone 17N

This map is generated by the Corporation of the County of Lambton, Information Technology Department on February 23, 2009.

DISCLAIMER:
These digital mapping products have been produced on the County of Lambton's Geographical Information System. Data provided herein is derived from sources with varying levels of accuracy and currency. This is not a survey product. The County of Lambton disclaims all responsibility for the accuracy or completeness of information contained herein. The County of Lambton assumes no responsibility for errors arising from use of these digital mapping products.



Occupation As Percentage of Female Labour Force 15 Years and Over



LEGEND

National Occupation Classification

- A. Management
- B. Business, finance and administration
- C. Natural and applied sciences and related
- D. Health
- E. Social science, education, government service and religion
- F. Art, culture, recreation and sport
- G. Sales and service
- H. Trades, transport and equipment operators and related
- I. Primary industry
- J. Processing, manufacturing and utilities

Proportional Pie Chart

Chart size is proportional to the female labour force population



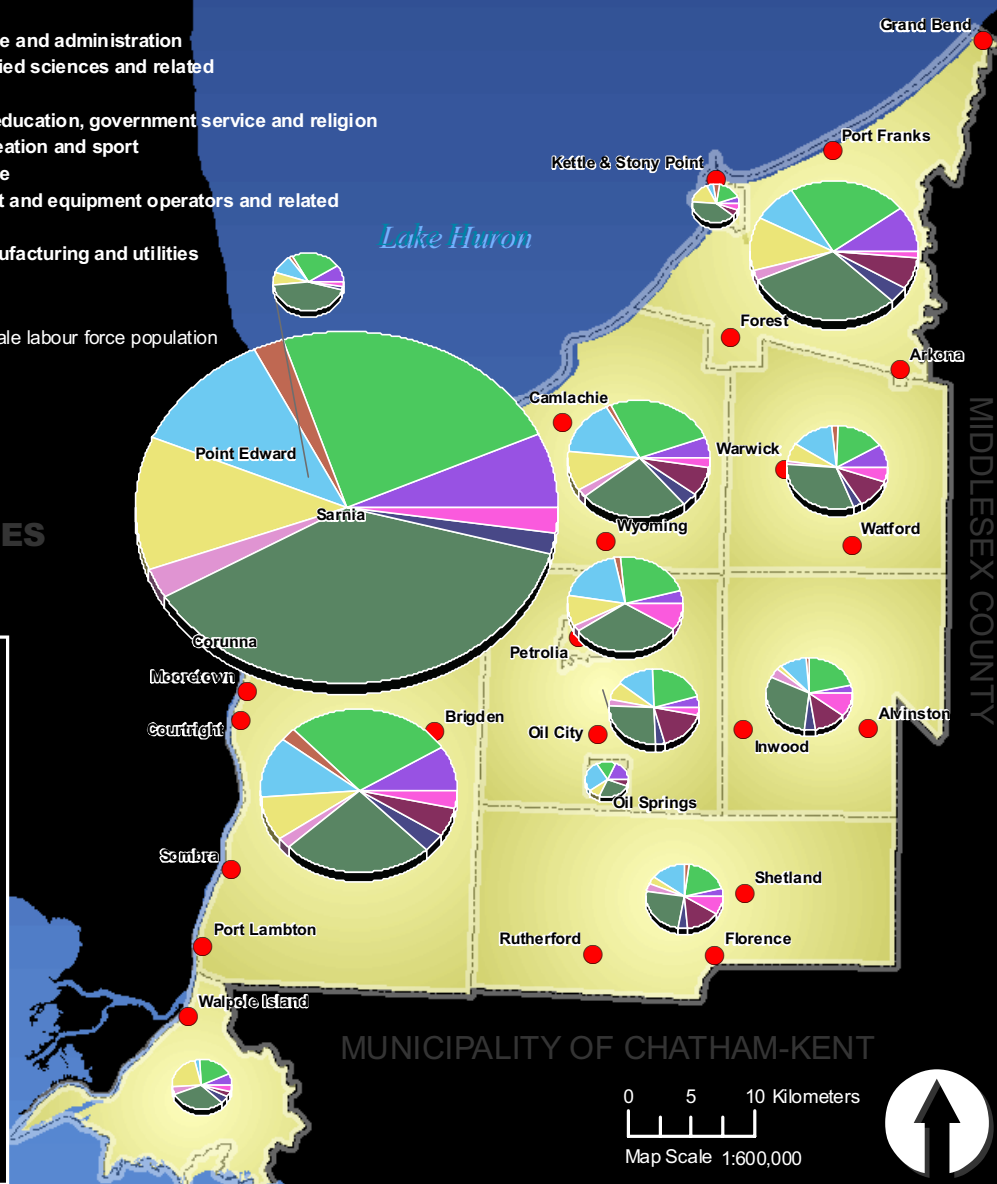
How to Interpret Information Presented on this Page?

Chart Above:

This chart provides a percentage comparison of the female labour force aged 15 years and older by occupation in Lambton County in 2006 with the respective national and provincial population percentages in the same occupations.

Map on the Right:

This map reveals the female labour force composition by occupation of those 15 years and older in each lower-tier municipality in Lambton County in 2006. The map legend, left of the map, describes what each of the colors in the map pie charts indicate, which correspond to the various occupations.



REFERENCE:
2006 Census Data provided by Statistics Canada.
Datum: NAD 83; Projection: UTM Zone 17N

This map is generated by the Corporation of the County of Lambton, Information Technology Department on February 23, 2009.

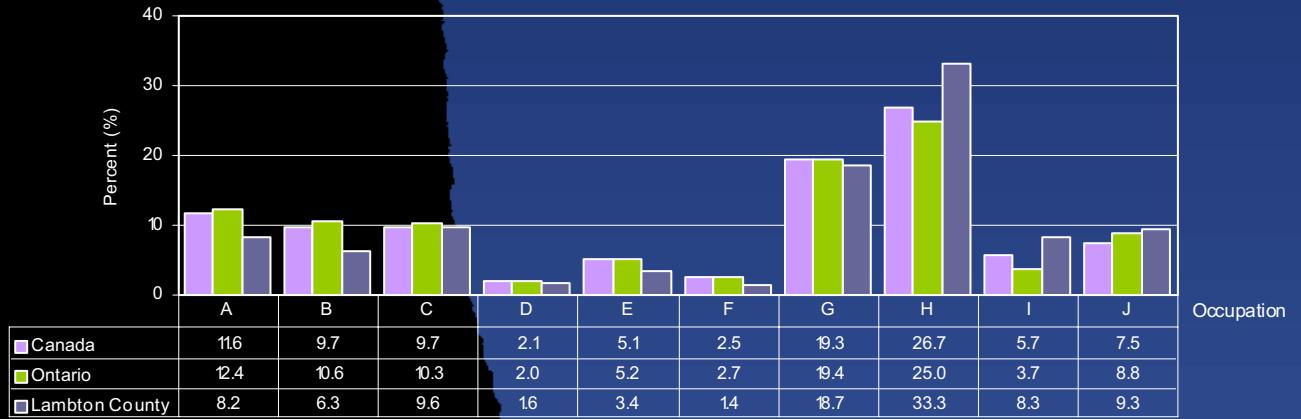
DISCLAIMER:
These digital mapping products have been produced on the County of Lambton's Geographical Information System. Data provided herein is derived from sources with varying levels of accuracy and currency. This is not a survey product. The County of Lambton disclaims all responsibility for the accuracy or completeness of information contained herein. The County of Lambton assumes no responsibility for errors arising from use of these digital mapping products.



Atlas of LAMBTON COUNTY

2006 Estimated Male Labour Force 15 Years and Over By Occupation

Occupation As Percentage of Male Labour Force 15 Years and Over



LEGEND

National Occupation Classification

- A. Management
- B. Business, finance and administration
- C. Natural and applied sciences and related
- D. Health
- E. Social science, education, government service and religion
- F. Art, culture, recreation and sport
- G. Sales and service
- H. Trades, transport and equipment operators and related
- I. Primary industry
- J. Processing, manufacturing and utilities

Proportional Pie Chart

Chart size is proportional to the male labour force population

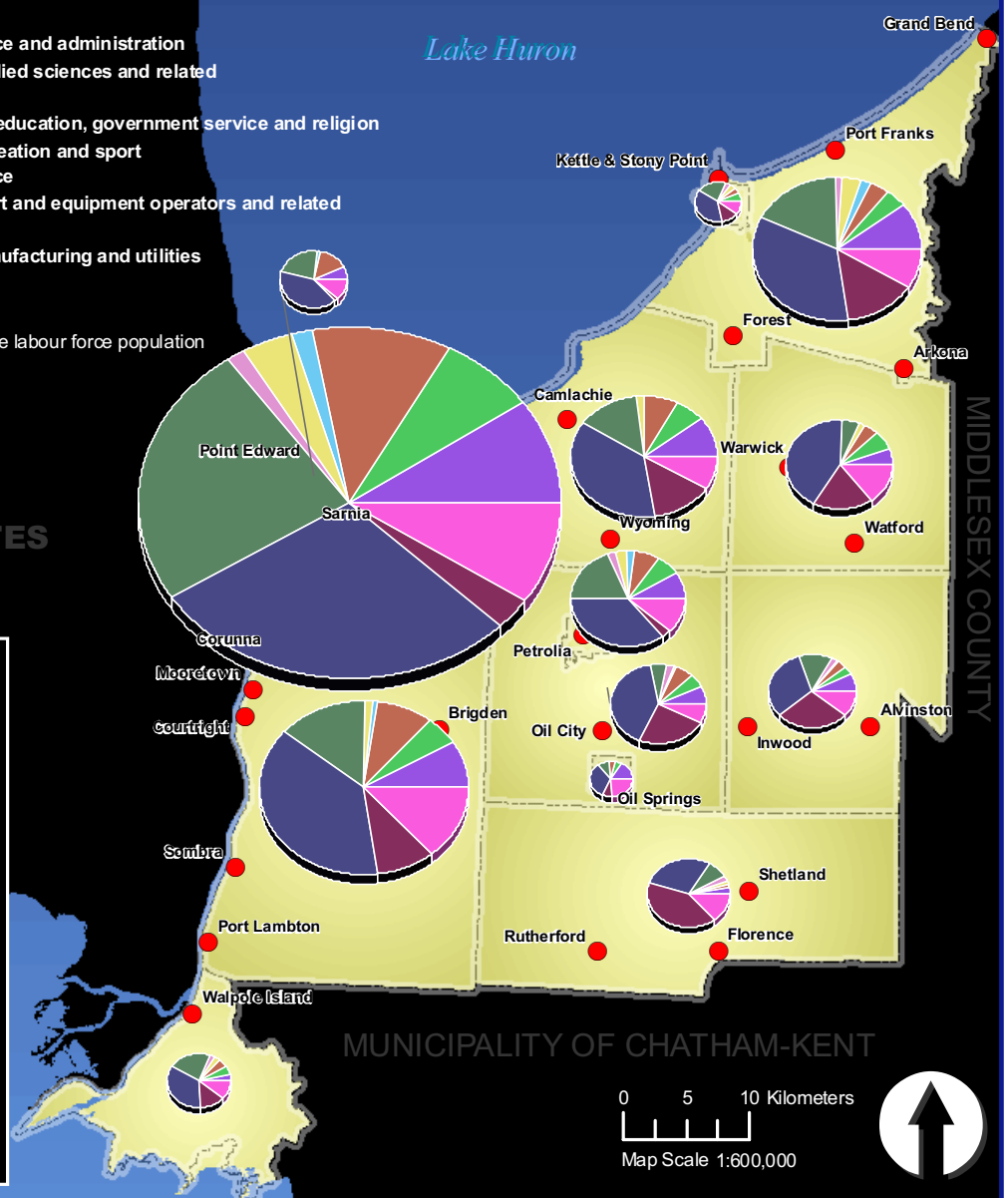


UNITED STATES

How to Interpret Information Presented on this Page?

Chart Above:
This chart provides a percentage comparison of the male labour force aged 15 years and older by occupation in Lambton County in 2006 with the respective national and provincial population percentages in the same occupations.

Map on the Right:
This map reveals the male labour force composition by occupation of those 15 years and older in each lower-tier municipality in Lambton County in 2006. The map legend, left of the map, describes what each of the colors in the map pie charts indicate, which correspond to the various occupations.



MUNICIPALITY OF CHATHAM-KENT



REFERENCE:
2006 Census Data provided by Statistics Canada.
Datum: NAD 83; Projection: UTM Zone 17N

This map is generated by the Corporation of the County of Lambton, Information Technology Department on February 23, 2009.

DISCLAIMER:
These digital mapping products have been produced on the County of Lambton's Geographical Information System. Data provided herein is derived from sources with varying levels of accuracy and currency. This is not a survey product. The County of Lambton disclaims all responsibility for the accuracy or completeness of information contained herein. The County of Lambton assumes no responsibility for errors arising from use of these digital mapping products.

