

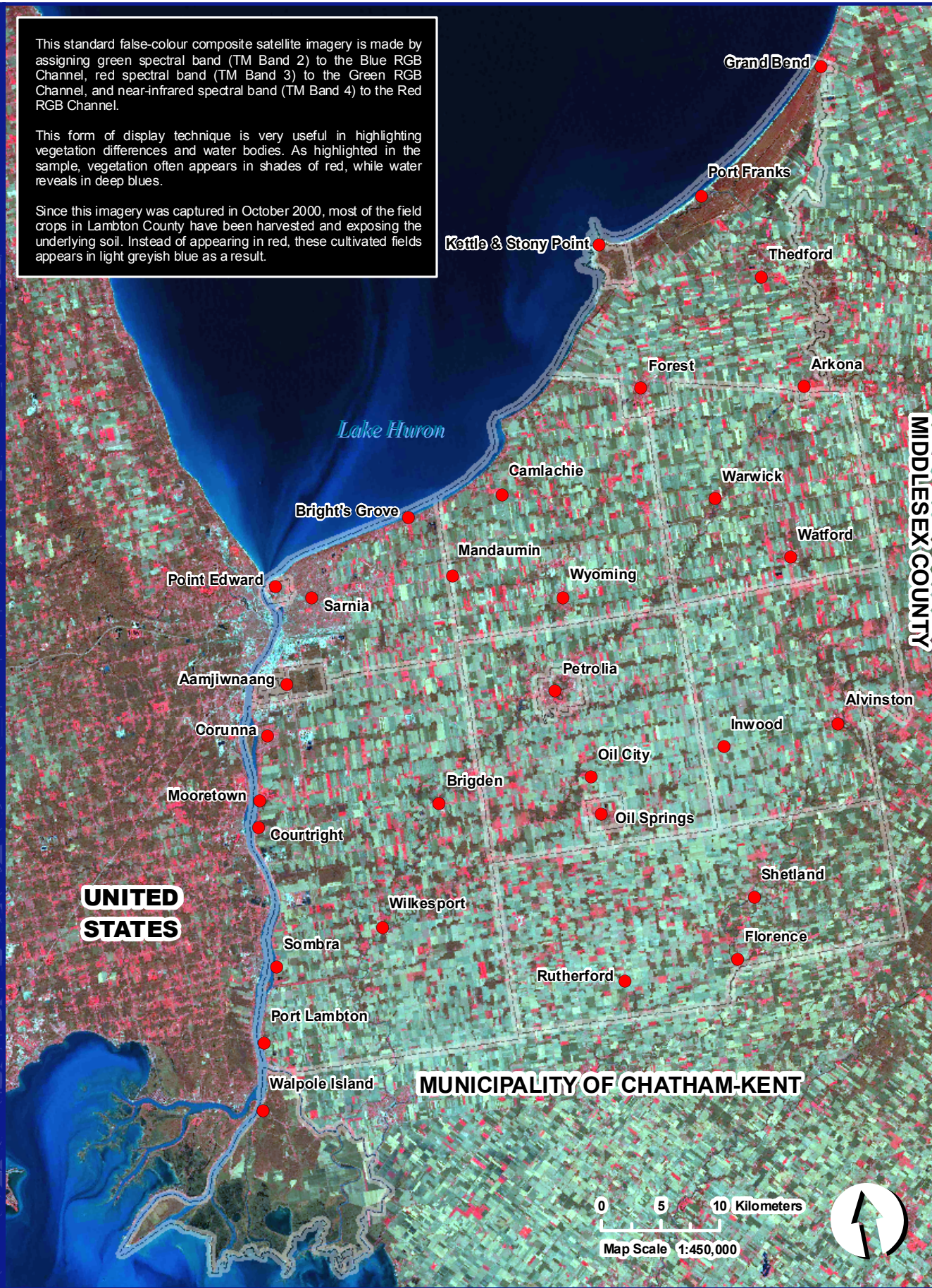
# Atlas of LAMBTON COUNTY

Standard False-Colour Composite of Landsat 7 Satellite Imagery

This standard false-colour composite satellite imagery is made by assigning green spectral band (TM Band 2) to the Blue RGB Channel, red spectral band (TM Band 3) to the Green RGB Channel, and near-infrared spectral band (TM Band 4) to the Red RGB Channel.

This form of display technique is very useful in highlighting vegetation differences and water bodies. As highlighted in the sample, vegetation often appears in shades of red, while water reveals in deep blues.

Since this imagery was captured in October 2000, most of the field crops in Lambton County have been harvested and exposing the underlying soil. Instead of appearing in red, these cultivated fields appears in light greyish blue as a result.



**UNITED STATES**

**MUNICIPALITY OF CHATHAM-KENT**

**MIDDLESEX COUNTY**

0 5 10 Kilometers  
Map Scale 1:450,000



**REFERENCE:**  
Landsat 7 Orthorectified Imagery (1999 to 2003)  
downloaded from Geobase ([www.geobase.ca](http://www.geobase.ca)).  
Datum: NAD 83; Projection: UTM Zone 17N

This map is generated by the Corporation of the County of Lambton, Information Technology Department on February 19, 2009.

**DISCLAIMER:**  
These digital mapping products have been produced on the County of Lambton's Geographical Information System. Data provided herein is derived from sources with varying levels of accuracy and currency. This is not a survey product. The County of Lambton disclaims all responsibility for the accuracy or completeness of information contained herein. The County of Lambton assumes no responsibility for errors arising from use of these digital mapping products.

