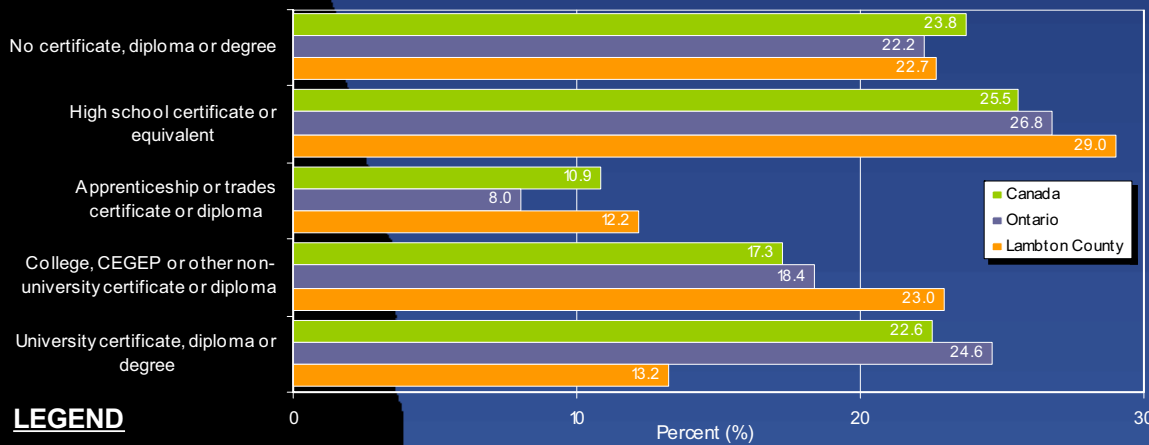


Atlas of LAMBTON COUNTY

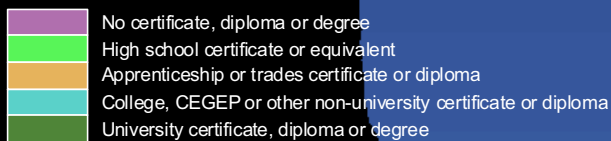
2006 Estimated Highest Educational Attainment of Total Population 15 Years and Over

Percent of Total Population 15 Years and Over By Educational Attainment



LEGEND

Level of Educational Attainment



Proportional Pie Chart

Chart size is proportional to the total population

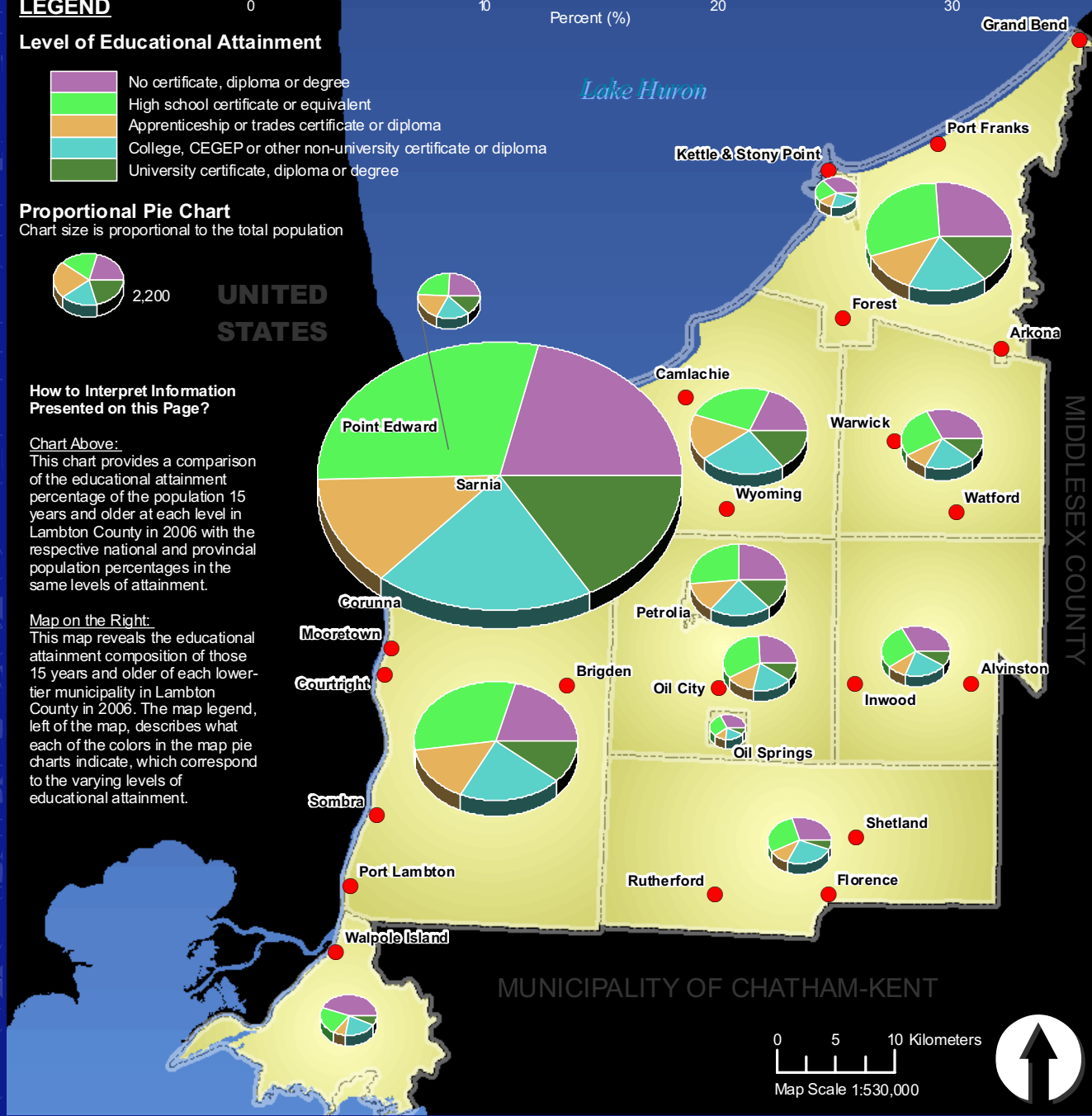


UNITED STATES

How to Interpret Information Presented on this Page?

Chart Above:
This chart provides a comparison of the educational attainment percentage of the population 15 years and older at each level in Lambton County in 2006 with the respective national and provincial population percentages in the same levels of attainment.

Map on the Right:
This map reveals the educational attainment composition of those 15 years and older of each lower-tier municipality in Lambton County in 2006. The map legend, left of the map, describes what each of the colors in the map pie charts indicate, which correspond to the varying levels of educational attainment.



REFERENCE:
2006 Census Data provided by Statistics Canada.
Datum: NAD 83; Projection: UTM Zone 17N

This map is generated by the Corporation of the County of Lambton, Information Technology Department on February 19, 2009.

DISCLAIMER:
These digital mapping products have been produced on the County of Lambton's Geographical Information System. Data provided herein is derived from sources with varying levels of accuracy and currency. This is not a survey product. The County of Lambton disclaims all responsibility for the accuracy or completeness of information contained herein. The County of Lambton assumes no responsibility for errors arising from use of these digital mapping products.

